

# Aspera *faspex*™ Server

## Global person-to-person and project-based file delivery and exchange

### AT A GLANCE

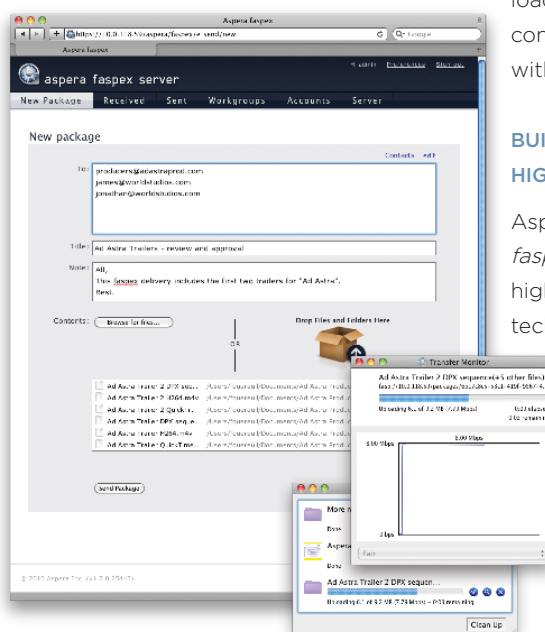
#### Key Features

- High-speed *fasp*™ transfers regardless of file sizes, transfer distance or network conditions.
- Global digital data delivery and exchange using a standard browser, Outlook email client, or mobile devices.
- Browse any remote storage location and attach files or directories to a *faspex*™ package.
- Drop boxes for ad-hoc content submission from 3rd parties with email invitation and notification.
- Self-registration for 3rd parties with moderated and un-moderated configuration.
- LDAP directory services integration for user authentication and authorization.
- Full data encryption available over the wire and at rest.
- Multi-server and multi-site configurations for improved performance and reliability.
- Available with Aspera On Demand and Amazon Web Services as a subscription-based service.

#### Key Benefits

- 100% reliable, high-speed data delivery.
- Flexible options for collaborators to easily send or receive *faspex*™ packages using their preferred clients.
- Large-scale global project-based file exchange within and outside the organization.
- Comprehensive security protects important project data in transit over the wire and at rest.
- Built-in server, user, workgroup and package management for easy administration.
- Monitor transfer progress and performance in real time.

Aspera *faspex*™ Server is an easy-to-use, flexible, and secure web platform for global file collaboration and exchange. It provides an intuitive, efficient way for individuals and groups to transfer files and directories at high-speed, regardless of size, transfer distance or network conditions.



### PERSON-TO-PERSON FILE EXCHANGE SIMPLIFIES COLLABORATION

With today's global teams, effective collaboration requires fast and efficient ways to share data between team members, especially as the size and number of files grows. Aspera *faspex*™ facilitates an easy, high-speed exchange of large files and directories over a wide area network, making it ideal for projects that involve multiple teams exchanging big data across continents and around the world.

Through a web-based interface, collaborators can create and send files and folders bundled as *faspex*™ packages to individuals or groups, whether they're within the

organization or external partners. Aspera *fasp*™ technology guarantees delivery at maximum speed, while enterprise-grade security features ensure that only authorized people have access to the data. Capabilities like drop boxes for ad-hoc content submission, mobile device support, and an automated desktop downloader ensure that teams stay on top of content changes, especially for projects with tight deadlines.

### BUILT ON FASP™ FOR HIGH-SPEED TRANSFERS

Aspera *faspex*™ is powered by *fasp*™, Aspera's unique, patented, high-speed bulk data transfer technology that transfers at

maximum speed, fully utilizing the available bandwidth while remaining fair to other business-critical traffic. Entire directories can be delivered to recipients at a fraction of the time — up to thousands of times faster than with conventional network protocols. For cloud-based installations, such as on Amazon Web

Services, Aspera's Direct-to-S3 technology also optimizes the intra-cloud transfer rates, assuring line-speed data movement along the entire path.

### POWERFUL DATA MANAGEMENT, ADMINISTRATION AND AUTOMATION

Aspera *faspex*™ Server is built for enterprise-scale deployments, with encryption over the wire and at rest, LDAP integration, user authorization, group management, and metadata capture and enforcement. Multi-server and multi-site configurations, especially for geographically dispersed teams, provide better performance and reliability than conventional network protocols.

# Aspera *aspex*™ Server

## SUPPORTED PLATFORMS

### Server

- Linux, Windows (XP SP3, 2003, Vista, 2008 (R2), Win 7)

### Browsers

- Internet Explorer, Safari, Firefox, Chrome

## OPTIONAL SOFTWARE

### Aspera Console

Provides web-based interface for enterprise-wide transfer management, monitoring, and reporting.

### Add-in for Microsoft Outlook

Extends collaboration capabilities to Outlook users. Enables high-speed transfers directly from the inbox.

### Aspera *aspex*™ mobile app for iOS

Enables content sharing via *aspex*™ from iPhone or iPad. Integrated with Photo Gallery.

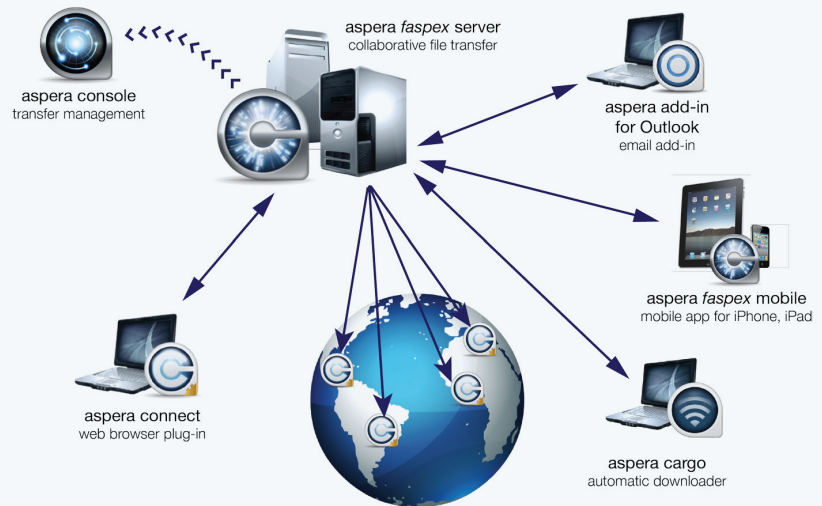
### Aspera Cargo Downloader

Automatically downloads and consolidates packages to a desktop or laptop.

## ASPERA ON DEMAND

- Optional web application add-on to a base web transfer server running on Amazon Web Services (AWS).
- Subscription service with usage-based pricing.
- Packages can be stored on AWS S3 cloud storage.
- Optimized intra-cloud I/O for AWS S3.

## ASPERA FASPEX™ SERVER ENVIRONMENT



## FEATURES AND BENEFITS

### Maximum data transfer performance

- Transfers are powered by *asp*™ — packages are sent at high speed, regardless of file sizes, transfer distance, or network conditions.
- Precise bandwidth control for maximum transfer speeds and fairness to other traffic.
- 100% reliable data delivery with automatic resumes of partial transfers, retries of failed transfers and fallback to HTTP for highly restrictive networks.
- Optimized cloud storage I/O achieves line-speed transfers along the entire path.

### Designed for fast, efficient collaboration

- Choice of interfaces for high-speed upload and download of *aspex*™ packages: browser plug-in, desktop application, Microsoft Outlook add-in, and iOS mobile app.
- Remote source publishing (enterprise and cloud) allows users to browse any remote storage location and attach files or directories to a *aspex* package.
- Private drop boxes for content contribution with tracking and notifications.
- Self-registration for 3rd parties with moderated and un-moderated configuration.

### Secure and reliable enterprise-grade platform

- Integrated with LDAP directory services for import, synchronization, direct authentication, and secure authentication, scalable to thousands of users.
- Full AES-128 data encryption available over the wire and at rest.
- Configurable security options include session timeout, concurrent login prevention and automatic deactivation after successive failed login attempts.
- Active / Active highly available cluster configuration with shared storage ensures continuous availability of the *aspex*™ application.

### Custom workflow integrations

- Enforceable custom metadata submission requirements and metadata validation.
- Automatic triggering of post-processing functions after upload completion.
- Custom programmatic integrations via a command line tool or a Web Services API.



### About Aspera

The creator of next-generation transport technologies that move the world's data at maximum speed regardless of file size, transfer distance and network conditions. Based on its patented *asp*™ protocol, Aspera software fully utilizes existing infrastructures to deliver the fastest, most predictable file-transfer experience. Aspera's core technology delivers unprecedented control over bandwidth, complete security and uncompromising reliability. More than 1,500 organizations across a variety of industries on six continents rely on Aspera software for the business-critical transport of their digital assets.

Learn more at [www.asperasoft.com](http://www.asperasoft.com)

©2012 Aspera, Inc. All rights reserved.

Product features, specifications, system requirements and availability are subject to change without notice. *asp* and *aspex* are trademarks of Aspera, Inc. in the U.S. and other countries. All other trademarks contained therein are the property of their respective owners.